



Wesley Hall

Crookes, Sheffield



www.wesleyhall.org.uk Wesley Hall is part of Wesley Ebenezer Methodist Church (charity no. 1150284)

Sunday 9th May 2021

We are now holding our Zoom services every other week, with the dates of our next two services below. We invite you to explore the other worship options (these are available on the last page) on the weeks when we are not meeting via Zoom. Our Zoom services are also available to watch on YouTube. They are unlisted videos so are not available to people searching YouTube and can only be accessed using a direct link. If you would like the link, or would prefer a DVD or audio recording of the services, just ask Matt.

Zoom on Sunday 16th May	10:30am	Rev. Judith Jessop
Zoom on Sunday 30 th May	10:30am	Cliff College Festival Livestream

THIS WEEK

❖ Fellowship Group

Our Thursday Fellowship Group is on Thursdays at 8pm via Zoom. We are looking at Ephesians over the next few weeks and all are welcome. Please ask Andrea for more information or for the Zoom details.

CHRISTIAN AID

❖ Christian Aid Week is 10 - 16 May 2021

The theme this year is climate justice. This climate crisis hurts us all, but people living in poverty fight the worst of it every day. From drought to flooding, climate change robs people of control over their lives. Extreme weather means people in the poorest countries are struggling to survive without a reliable source of water. Your gift could help a community build an earth dam, so when the rains do come, they will have the water they need to live. A reliable source of water will help families withstand long drought or relentless rainstorms. You can give on line at <http://www.christianaid.org.uk> or by telephone by calling 020 7523 2269. Alternatively, you can drop off a donation at church either by handing it in at the church office or by putting it in the church post box (please put in an envelope marked Christian Aid). Many thanks, your donation is valuable especially as wider fundraising in the community is much more difficult at the moment.

❖ Christian Aid Coordinator

Christian Aid aims to end poverty and injustice worldwide. Christian Aid week, which takes place each year in May, is a big part of their fundraising effort and in 2019 £8million was raised. Andrea Killingsworth has been coordinating Christian Aid week for Wesley Hall since 2009 and is looking to step down from doing this, although she will continue to support it. The main focus of the week has been the door-to-door collections during the week in May, but other fundraising activities have also taken place. However, how things are approached is not set in stone. If you want to know more about what is involved in coordinating Christian Aid week, please speak to Andrea. Our thanks go out to Andrea for all her hard work while doing this.

COMING SOON

❖ Leadership Team

The Wesley Hall Leadership Team meets monthly to pray, share ideas and plan/review church events and their next meeting is on *Monday 17th May*. Please pray for the meeting and let a member of the team know if there is anything that you would like to be discussed.

Those currently serving on the Leadership Team are Sean, Claire, Louise, Andrew, Matt, Jo and Dorothy

❖ Wesley Hall Toddler Group

Our Wednesday Toddler Group is returning but with two sessions: 10–11:30am and 1–2:30pm with the first day back being *Wednesday 19th May*. This is an exciting and positive step toward supporting the needs of families within our community. We will be following Government guidelines and our risk assessment will ensure safety measures are in place. Like our Wesley Wigglers baby group, we will be limiting numbers and operating a booking system.

It would be great to have some volunteers over the day to ensure everything runs smoothly. Here is a list of activities so if there is anything you feel able to help with, please get in touch; you don't need to commit to both sessions or every week, as I can put together a rota.

- Setting up the hall from 9am
- An extra person to float and help with any cleaning throughout such as giving the toys a wipe down where possible at both sessions
- Packing down from 2:30pm

If you are able to offer any help for any of the above, we would be so grateful. I am also happy to answer any questions and talk through any concerns from anyone regarding the group.

Claire: 07412 124 310 / families@wesleyhall.org.uk

❖ TRIBE

We would like to arrange an outdoor get together for the families in our church on *Sunday 23rd May* at 11am. We were thinking of meeting on the Bole Hills for a play, chat and picnic lunch. This is open to our children of crèche and TRIBE age.

It would be helpful to contact me if you are interested in coming so I can get an idea of numbers and make a list of those attending. It is important that we do not exceed 30 people in line with government guidelines. Claire 07412 124 310 / families@wesleyhall.org.uk.

❖ Cliff College Festival 2021 (Around the Campfire)

Festival at Home 2021 is taking place from *Saturday 29th to Monday 31st May* and will be a digital event due to the ongoing event restrictions.

During Festival at Home we are unpacking the theme Around the Campfire. This is an opportunity to meet together as the church from across the country and around the world, to worship and pray together and to learn from and be challenged by God's word and by one another.

Over the weekend, we hope to enable you to encounter God through worship, fellowship, seminars, games, Bible studies, reflections and more, from the comfort of your own home. It is our prayer that wherever and however you engage with Festival at Home, you might also engage with God. A link with more information is below:

<https://cliffcollege.ac.uk/cliff-festival/cliff-festival-2021-around-the-campfire>

Wesley Hall will be joining the festival for Bible study on the morning of Sunday 30th May at our usual 10:30am. The Bible study will include worship and will be led by Cliff College principal Rev. Ashley Cooper, who will be exploring the theme of fire from the book of Exodus. More details on how to access this will be shared closer to the time.

❖ **AGM**

We will be holding our AGM after our Zoom worship on *Sunday 13th June*. This meeting is open to everyone, whether you are a member or not, so please put the date in your diary.

❖ **Return to Face to Face Worship**

Our plan is to return to face to face worship from step four of the lockdown easing roadmap, which will mean that our first service back will be no earlier than *Sunday 27th June* and we would then return to weekly worship in the building. This is dependent on Government advice at the time so we will keep you updated if this changes.

AND FINALLY

❖ **Joseph Bradshaw**

It is with deep sadness that we bring you news of the death of Joseph Bradshaw who grew his angel wings on 7th April, and his funeral took place this week. Joseph was the young son of Sandra Bradshaw (nee Owens) who many of us will remember from her time at Wesley Hall. Our prayers are with Sandra and all the family at this very sad time.

❖ **Dial-a-Prayer & Podcast**

During lockdown we (the Methodist Church) heard that many people didn't have access to online services so we set up free phone lines that are updated on a Thursday with a new prayer and our podcast. We are delighted that nearly 6,000 people have used this service and would ask you to share the numbers with anyone you know who might not wish to use online services.

Listen to a prayer: 0808 281 2514

Listen to the President and Vice-President: 0808 281 2695

Listen to news: 0808 281 2478

❖ **Thank You to the Culture Recovery Fund!**

A huge thank you to the Culture Recovery Fund for Heritage for their £15,000 grant to Wesley Hall. This grant will enable us to cover our building running costs as we begin reopening over the next few months (in line with the Government lockdown easing guidance) and welcome our users back. We are really looking forward to seeing the church building fill with life again! #HereForCulture

❖ Wesley Hall Building Manager

When Rev Sally moved on, she asked if I could be Matt's line manager until such time as she could be replaced.

I have met with Matt a number of times and I am conscious of the fact that he is having to undertake tasks that were not in his original job description. For the last two months, Matt has been keeping a record of the time he is spending on various tasks. I thought it would be helpful to share this information with the wider congregation.

The details are as follows and are in percentages of his time spent:

- 35% Work in relation to the building
- 27% Leadership, line management of Claire and Sean, and publicity
- 24% Finance, bookings, and general emails
- 14% Other duties including his management, CPD etc

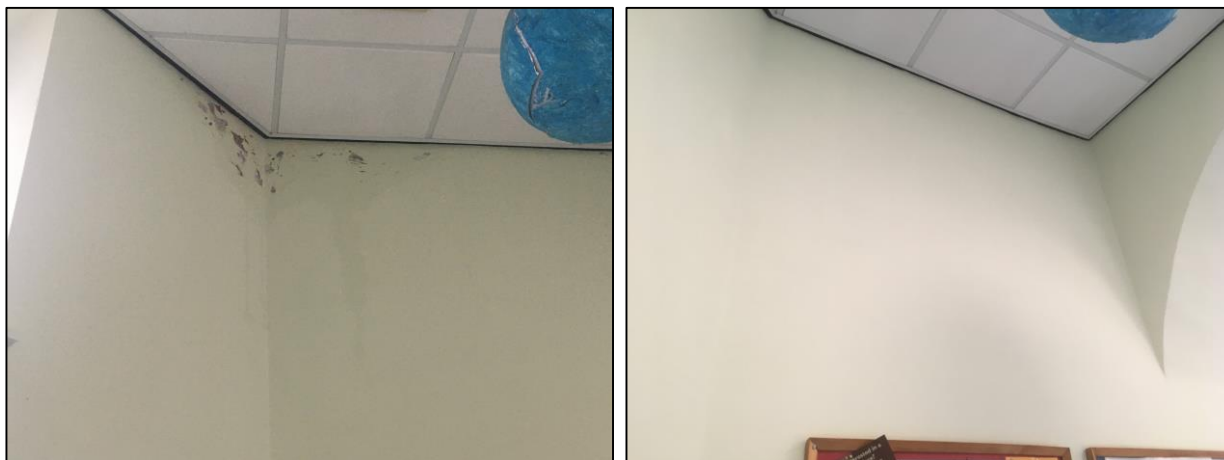
We must also remember that Matt is, the interface with the public when they call, he takes all the phone and email enquiries and is often the only person in the building dealing with all enquiries.

I feel that it is not sustainable for Matt to be expected to undertake the leadership and staff management roles as well as other tasks that prevent him from concentrating on his main responsibilities.

I consider that we need to take these concerns into account as we look at the future vision for, and, oversight of Wesley Hall. Please let me know of any thoughts and suggestions you might have regarding this. Steve Wright.

❖ Entrance Area

We have recently had a lot of water coming into the Entrance Area, so much that it has been dripping down the walls. The roof is new and this is not the issue, but much of the pointing on the walls around the front of the roof was missing. This area has recently been repointed (hence the scaffolding over Easter) and Matt has now repaired and repainted the inside, replaced the stained ceiling tiles (see some before and after photos below) and also replaced the lights with LED panels. It is likely that much more pointing will be required all around the building in the near future for which we will have to fundraise.





PRAYER POINTS

- ❖ The situation with COVID in India, that the spread of the virus would slow and that medical supplies would reach the county to help treat those who are ill.
- ❖ For all the groups that share our building as they prepare to return to face to face meeting later in the month, for all the children's groups that have already returned, please pray that this can be done safely.
- ❖ For our church, community, country and the world as we deal with and respond to the coronavirus pandemic.
- ❖ Please give thanks that our grant application for £15,000 to the Culture Recovery Fund for Heritage has been successful.

If you have any prayer points to include in the newsletter, please pass them on to the editor (see contact details at bottom of page).

SUNDAY WORSHIP

Today we, along with most churches, will not be worshipping in our church buildings, but in our own homes. Below are a number of options (in no particular order) to help us to do this:

❖ Vine at Home Service

Along with this newsletter, there should also be a separate attachment called 'Service 1 (Vine)'. This is a short service that can be used at home and includes prayers, a reflection and songs (that can be played via the embedded YouTube links).

❖ Methodist Church in Britain Worship at Home

Along with this newsletter, there should also be a separate attachment called 'Service 2 (Methodist)'. This is a short service that can be used at home and includes prayers, a reflection and songs (that can be played via the embedded YouTube link).

❖ Wesley's Chapel - Livestream

Wesley's Chapel in London is live-streaming worship, adapted for a non-physical congregation, at 9:45am and 11am today. The YouTube link for the stream is:

<https://www.youtube.com/channel/UCUAUqhmhevz5sqhh72LIMxA>

❖ Methodist Central Hall, Westminster - Livestream

The team at Methodist Central Hall are providing live worship via their YouTube channel at 11.00am every Sunday. Alternatively you can watch again online at a time convenient to you. Just click on this link: <https://www.youtube.com/channel/UCn9TkFzl-gk--V3JapCS0sQ> or type "methodist central hall Westminster youtube channel" into your search engine and it should pop up. The service is between 45 mins and an hour.

❖ Sheffield Methodist Circuit Streamed Services

[Victoria Hall](#)

[Greenhill Methodist Church](#)

[Coal Aston Methodist Church](#)

[St Paul's Methodist Church, Dronfield](#)

[St Andrew's Psalter Lane Church](#)

[Carterknowle Methodist Church](#)

[Totley Rise Methodist Church](#)

[Stocksbridge Christian Centre](#) (as Part of the Cornerstone Mission Partnership)

[Christ Church Stocksbridge](#)

[Stephen Hill Methodist Church](#)

[St Andrew's Gosforth Valley](#)

[Church of Christ, Darnall](#)

[Victoria Stafford Road](#)

We will endeavour to continue to offer a variety of home worship options each week. If you come across a good one, please send it to the newsletter account.