



Wesley Hall Methodist Church

Minister: Rev. John Simms
www.wesleyhall.org.uk



Sunday 26th September 2010

We welcome you to worship today

We hope you find a warm welcome, particularly if you are with us for the first time. If we don't manage to speak to you personally and you would like more information, please pick up a welcome card and leaflet. All song words are projected onto the wall above the dais or can be found in the books provided. Separate song sheets are available at the back of church for any songs that are not in the hymn books. Recordings of our Sunday morning services are usually available, please see Matt Irons.

Today's services:	10:30 am:	Preacher	Mr Brian Jones
		Worship Leader	Sarah Owen
		Steward	Simone Hardy
	6.30pm	Service of Prayer	Rev John Simms
		Steward	Dorothy White

<i>And next week</i>	<i>10:30 am:</i>	<i>Preacher</i>	<i>Rev John Simms</i>
<i>3rd October</i>		<i>Steward</i>	<i>Pat Singleton</i>
Parade Service			

THIS WEEK:

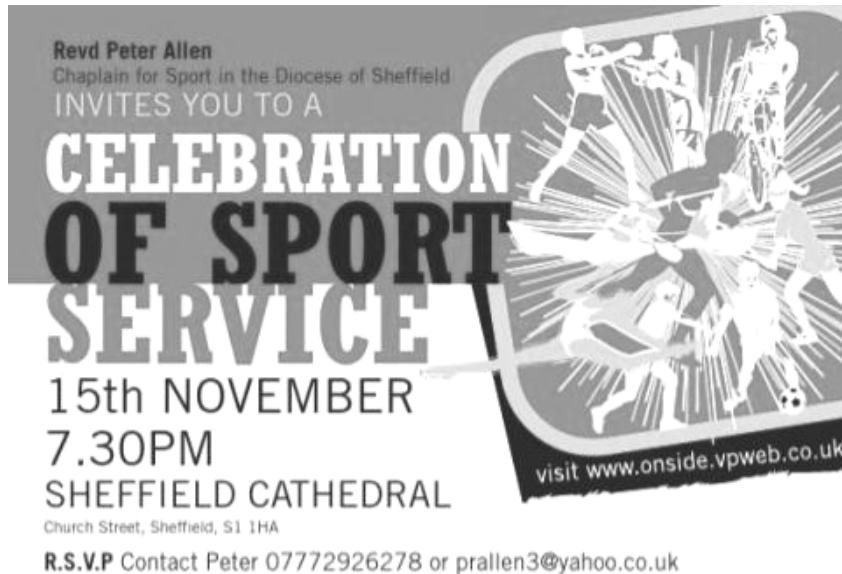
- ❖ **Panto Rehearsals** at Walkley Ebenezer – Friday's at 7.30pm

COMING SOON...

- ❖ There will be a Congregational Meeting on **Tuesday 5th October** at 7:30pm. This will be to discuss items that will be put before the new joint Church Council with Walkley Ebenezer. Everyone is welcome.
- ❖ Wednesday Group – **6th October**, talk by Ken Bell on the subject of "God Bless America"
- ❖ Mary Tozer – **Thursday 7th October**. The next service will be from 7-8pm. All are welcome. Dorothy
- ❖ Men's Breakfast – **Saturday 9th October**. A group of us continue to meet over a bacon & egg sandwich from 8.30-9.30am. More info from Gareth and Jim.
- ❖ Alpha - we are planning to run another **Alpha course** starting in early February. There will be a meeting to discuss this on **Tuesday 12th October** at 7:30 pm at Church.
- ❖ **Ultra Darwinism and Creationism: Evolution and Belief in God-Is it Either Or?** There will be a talk by Professor Conor Cunningham from Nottingham University discussing his theories in his new book "Evolution-Darwin's pious idea" at 7.30pm on **Monday 18th October**. The talk will be held at St Andrew's United Reform Church, Upper Hanover Street. There will be refreshments and it is suggested that a donation of £5 be made. Please book in advance. Tel: [REDACTED] (day) and [REDACTED] (evenings and weekends) or e-mail Judith.adam@sheffield.gov.uk . The talk is in association with the "Off the Shelf Festival of Writing and Reading."

- ❖ As you may know three of us will be going to Kenya for **Silas's wedding** later this year and we are planning to visit a project at Silas's parents Church which is an orphanage for children whose parents had AIDS. We would like to take a gift and with this in mind are planning to have a Table Top Sale on **October 30th** 11-2pm at Church. At this stage this is just advance notice as I am still ironing out full details. However, we plan to have on sale children's toys, bric-a-brac, books & DVD's and gently worn clothes plus a cake stall and hopefully lunches served. Please let myself or Alison MacFarlane know if you are able to help with this, plus please start to see what items you may have that you could donate. It is not a jumble sale so only reasonable quality items please. *Thanks Andrea*

And finally...



From Sheffield West Circuit:

Disciple

The Beacon Church is running a new Disciple course, led by Neil Craig. There will be an introductory information meeting at The Beacon at Broomhill on Tuesday 5th October at 7.30pm. Please come along, or call [REDACTED] for more details.

Disciple has transformed the lives of individuals and congregations in many parts of Great Britain and across the world. It has drawn people closer to God, deepened their discipleship and opens their eyes into the way that God is leading them.

The course moves through the biblical story from creation in Genesis to the New Jerusalem in Revelation. There are theme words and verses, key characters, events and topics which fix the sequence of the biblical story in the minds of the participants. Disciple is studied in a group of up to ten, with two group leaders. It meets weekly over a year (with space for holidays etc). Each group meeting begins with a time of devotion and a short DVD presentation, before questions and activities applying the Bible reading to the context of the participants' daily lives. As part of Disciple everyone commits to a daily personal Bible study of 30-45 minutes, which is then picked up in the weekly meetings. Everyone receives a manual, with the reading framework, covering 70% of the Bible and space for writing notes. Leaders have a facilitation manual, but are also group participants.

The editor for October is Matt. Please place items for the newsletter in the pigeon hole, send an e-mail to newsletter@wesleyhall.org.uk or call him on [REDACTED] by Wednesday evening.